

Published on *EMS Energy Institute* (<http://www.energy.psu.edu>)

[Home](#) > EMS Energy Institute Floor Plans

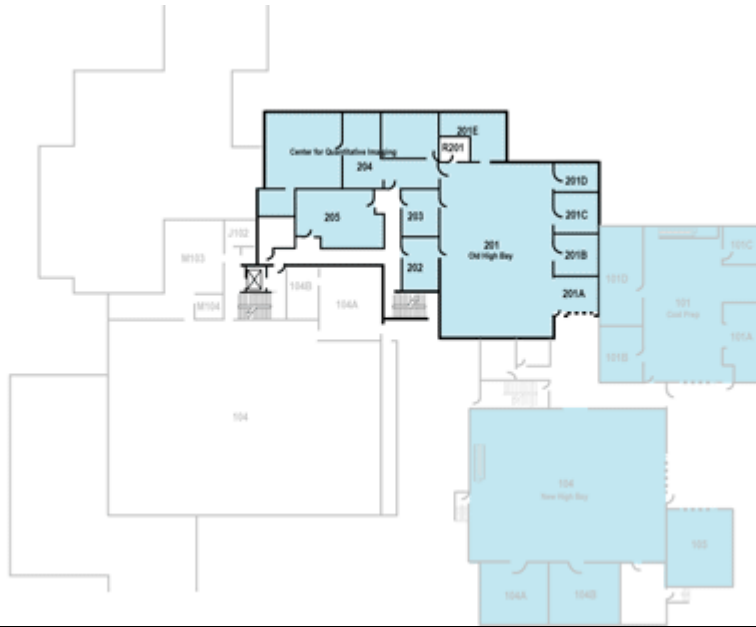
## EMS Energy Institute Floor Plans

### Academic Activities



[1]

4<sup>th</sup> floor layout



[2]

## 2<sup>nd</sup> floor layout

## Academic Projects



[3]

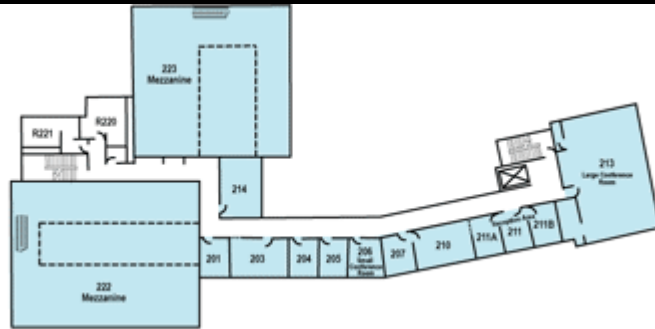
## 2<sup>nd</sup> floor layout



[4]

## 1<sup>st</sup> floor layout

# Coal Utilization Laboratory



[5]

# 2nd floor layout



[6]

# 1st floor layout

# EMS Energy Institute Building (1943 Pine Hall Road)



This site is maintained by the EMS Energy Institute. If you have questions about this site, please contact [eiwebmaster@ems.psu.edu](mailto:eiwebmaster@ems.psu.edu)

**Source URL:** <http://www.energy.psu.edu/floorplans.html>

**Links:**

- [1] [http://www.energy.psu.edu/sites/default/files/files/AA\\_4th\\_floor\\_map.gif](http://www.energy.psu.edu/sites/default/files/files/AA_4th_floor_map.gif)
- [2] [http://www.energy.psu.edu/sites/default/files/files/AA\\_2nd\\_Floor\\_map.gif](http://www.energy.psu.edu/sites/default/files/files/AA_2nd_Floor_map.gif)
- [3] [http://www.energy.psu.edu/sites/default/files/files/AP\\_2nd\\_floor\\_map.gif](http://www.energy.psu.edu/sites/default/files/files/AP_2nd_floor_map.gif)
- [4] [http://www.energy.psu.edu/sites/default/files/files/AP\\_1st\\_floor\\_map.gif](http://www.energy.psu.edu/sites/default/files/files/AP_1st_floor_map.gif)
- [5] [http://www.energy.psu.edu/sites/default/files/files/CUL\\_2nd\\_floor\\_map.gif](http://www.energy.psu.edu/sites/default/files/files/CUL_2nd_floor_map.gif)
- [6] [http://www.energy.psu.edu/sites/default/files/files/CUL\\_1st\\_floor\\_map.gif](http://www.energy.psu.edu/sites/default/files/files/CUL_1st_floor_map.gif)
- [7] [http://www.energy.psu.edu/sites/default/files/files/EI\\_Bldg\\_Science\\_Park.gif](http://www.energy.psu.edu/sites/default/files/files/EI_Bldg_Science_Park.gif)
- [8] [http://www.energy.psu.edu/sites/default/files/files/RE\\_map.gif](http://www.energy.psu.edu/sites/default/files/files/RE_map.gif)